



A Brief Profile Of Dipti Foundation (DF)

Name of the Organization: Dipti Foundation

Organizational status: Non-Government Organization (N.G.O)

Acronym: DF

Year of establishment: April, 1999

Head Office Address: 45 Senpar Parbota, Mirpur -10, Dhaka -1216, Bangladesh

Contract number: +88 019713504, **E-mail:** diptifoundation2019@gmail.com

Legal status: N.G.O **Affairs Bureau No:-**1361 Dated: 06/04/1999. Validity 05/04/2029

Trust registration: (IV) 20 Date: April 04, 2021

Tin Registration: TIN: 269564243920 Taxes Circle-055, Taxes Zone 03, Dhaka.

Bin Registration: 006384574-0401

Contact person with address: Elish Arun Majumder
Executive Director
45 Senpara Parbota, Mirpur -10,
Dhaka-1216, Bangladesh
Cell: 01971003504, 01711003504
E-mail: diptifoundation2019@gmail.com
Website: www.diptifoundation.org

Background: Dipti Foundation (DF) is a non-political, non-profit, non-government organization working not only for poverty alleviation and empowering marginalized community people through providing resources but also promoting human rights, education, health education, working and supporting good governance and rule of law in the society since 1999. Rev. Salman Sowpan Boss started this organization with flood 1998 response project. From 2018 it has been restructuring its' general body and executive board and reformation its' strategy. The formation of this voluntary, charitable, relief and development organization had its roots in Dhaka; when the country was affected by any natural disaster DF stood for the affected poor community people to save their lives and livelihoods.

DF's plan activities have a range of services which include socio-economic development, WASH, creation care, disaster risk reduction, climate change adaptation, livelihoods, child sponsorship, psychosocial support through counseling, empowerment and various capacity-building programs. DF thrust the protection of the environment and creating resilient community are the most priority work for the vulnerable to disaster and climate change. Its services that have ensured the well-being and improved living of people, infected and affected communities, are acknowledged by all.

Goal:

“To improve the quality of life of the economical and socially disadvantaged families in the community through the involvement of the members, especially the women, disabled and old

aged member of these families in development programs and thereby establish an improved and flourishing transformed community”.

Objectives: The objectives of DF are to render a wide range of professional services to accelerate the pace of the socio-economic development of the country. These are:

1. To assist in the development of initiatives through community groups for socio-economic development; especially for disadvantaged community people i.e. Persons with Disabilities, old age, children, and women.
2. To adopt and implement necessary humanitarian assistance and rehabilitation activities and projects for the people affected by natural or man-made disasters. To take necessary and appropriate programs to mitigate climate-induced disasters through community-based DRR programs. Take urgent action to combat climate change and its impacts.
3. To encourage young people to be community volunteers and train them in their roles for society and also to engage or link with national and international volunteer groups for the betterment of volunteerism.
4. Establish community base organizations e.g. schools, orphan homes, clinics, hospital etc. for the betterment of the most vulnerable community people.
5. Creating opportunities for involving the resource-poor underprivileged communities in resource management, biodiversity conservation of the micro environment and sustainable agriculture practices and optimum resource extraction.
6. Enabling resource poor communities to sustain their livelihood through improved production technology, access to market outlets, enhancing the productivity of resource base and human labor.
7. Building up capacity of the underprivileged community to ensure good governance and conserve human rights through social movement, policy advocacy and institutional linkage.
8. To undertake humanitarian support and effective response to any devastating situation which occurs in the area of the vulnerable affected community; so they will be better able to cope with and adapt to shocks.
9. To help combat social problems like dowry, polygamy, and early marriage etc. through empowering women in their families and communities through engaging in economic sectors, ensuring rights, freedom from violence and their access to and influence within, social and political space.
10. To promote advocacy, lobby and seek alliances for policy formulations and behavioral changes of relevant organizations and institutions and of the poor and disadvantaged population in Bangladesh.
11. Sensitize the local community to the conservation of the micro environment and sustainable agriculture practices.
12. To develop a training center with proper accommodation facilities for providing training staff, project stakeholders or development partners for developing their capacity and skill in development areas.

Vision:

Creating a just society, where everybody respective of their caste, creed, sex, religion, social or political affiliation will live in peace and harmony under the bond of universal value of love and compassion manifested by our God.

A transformed community will live together with dignity, equity, justice, peace and hope.

Mission:

Building the capacities of individuals, families and communities to reach their full potential, mental, moral, social and economic well being through a participatory, just and sustainable development process.

Core Values:

“Love your neighbor as yourself” - James 2:8

- Compassion
- Stewardship
- Transparency
- Accountability

Our Strategy

- To be built community people as human resource; especially children and women from marginalize community.
- Conserving human rights and promoting good governance,
- Building up peoples’ organization and leadership development, To develop community-owned and managed institutions to sustain the livelihood activities
- Consider gender, Equity and Environment as integral issues.
- To establish neighborhood community by increasing efficiency and effectiveness
- To create a safe home place through Disaster Risk Reduction and Humanitarian Response program.
- To address climate change and sustainable resource management to improve people’s lives and livelihoods
- To develop community-based models for natural resource management to protect and use the resources for sustainable development
- To work in collaboration with the government and the industry along with nongovernment domestic and international development organizations

Our Guiding Principles

Dipti Foundation believes that to create an inclusive child-friendly society needs to empower Persons with Disabilities and marginalized poor families and improve their social status through economic wellbeing and awareness of human rights in Bangladesh. The following Guiding Principles DF is the execution of its Mission:

- DF’s commitment is to people in under-served communities in Bangladesh. The organization works to maintain trust, foster community participation and remain accountable to beneficiaries.
- DF operates following the four major humanitarian principles:
 - **Humanity:** Human suffering must be addressed whenever it is found. The purpose of humanitarian action is to protect life and health and ensure respect for human beings.
 - **Neutrality:** Humanitarian actors must not take sides in hostilities or engage in controversies of a political, racial, religious or ideological nature.
 - **Impartiality:** Humanitarian action must be carried out on the basis of need alone, giving priority to the most urgent cases of distress and making no distinctions on the basis of nationality, race, gender, religious belief, class or political opinions.
 - **Operational Independence:** Humanitarian action must be autonomous from the political, economic, military or other objectives that any actors may hold about areas where humanitarian action is being implemented.

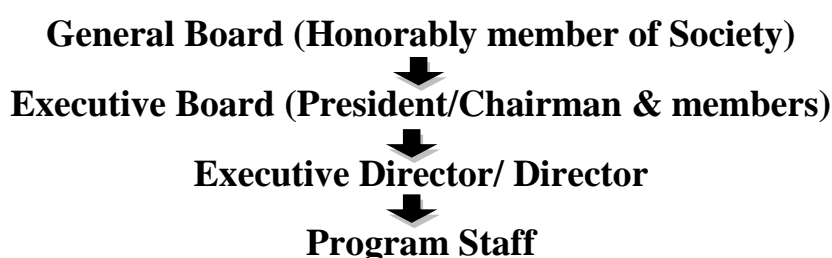
Target Groups: DF’s target group is always the marginalized community people, most disadvantaged segments of society especially persons with disabilities, women, children and calamity-stricken people.

Financial Management Capacity: DF has instituted prudential accounting practices in all levels of financial dealings. The whole system is guided by a financial manual and follows the Accounting Standard. External audit is a regular process selected by the Board. The organization has the credibility of strong financial monitoring to ensure that the services are properly delivered to the people through the cost-effective utilization of the resources supplied.

Management: Any adult citizen of Bangladesh engaged in any profession and with initiative and enthusiasm for social welfare is eligible to become 15 members of the DF General Body. General members elect five members as Executive Committee for a period of two years from amongst themselves by procedures specified in the Constitution.

The Executive Committee formulates the policies and appoints an Executive Director/ Program Director who are full-time staff of the organization responsible for the execution of the policies. He is supported by a group of committed and professional staff. The Program Director being the Chief Executive Officer of the organization is also the member-secretary of the Executive Committee and is the linkage between policy formulation and execution.

Organizational Structure of the Society:



List of Executive Board members:

Name of Members	Designation	Education	Profession
Ambrose Gomes	Chairman	MA	NGO professional
Tenjin Ghosh	Vice-Chairman	MA	NGO professional
Aporna Lucy Sarkar	Treasurer	BBA	NGO Professional
Magor Gonendro Baroi	Executive Member	BSS	Clarzee
Dalia Ratno	Executive Member	BBA	NGO Professional
Mr. Elish Arun Majumder	Executive Director	M.Com	Member Secretary – DF board

Program principle/thematic area:

- Integrated Approach:** Addressing community needs through implementation of Integrated Community Development program. Dipti Foundation (DF) hopes that community groups (Somity) will act as Transforming Change Agents in their communities by initiating and continuing the development effort.
- Awareness:** The awareness Issues have been discussed in the community group on Good Governance, Land Rights for Landless People's Women & Child Trafficking Issues, Child Marriage & Dowry Prevention, Human Women & Child Rights, and vulnerable Group Development.
- Economic development:** Community groups will be started with self-help groups and a micro-credit approach for their economic development. DF will build their capacity on leadership, and account management to keep all savings and IGA accounts. As an integrated income generation project for slum dwellers and urban poor particularly women of Dhaka City, to bring the poor especially the women in the mainstream of the development and

create wide employment opportunities with special emphasis on income generating activities through providing credit and encouraging savings.

- D. **WASH:** DF has planned to take the appropriate program on safe water supply, sanitation system, and hygienic practice to ensure 100% sanitation in the program area on availability of fund
- E. **Child Rights and Protection program:** DF has planned to start a Child Sponsorship Program for the Orphan, Semi Orphan, and Street children in the national building by providing care, support, and protection through safe home /shelter, food, and education.
- F. **Vocational skill training program:** The Organization has planned to help the unemployed youth (Male & Female) to build their capacity through vocational skill training to involve them with any IGA or job creation activities in their native community.
- G. **Disaster Management, Climate Change Adaptation and Humanitarian Response:** The Organization has mended to play a humanitarian role due to any natural calamity on the availability of funds. To save the environment of our country; the organization has planned to work on DRR&CCA as a cross-cutting issue of every projects
- H. **Women Empowerment:** DF has been very much concerned about the empowerment of women. DF strongly believes that economic emancipation of the women can make them empowered which may also help to establish their social status. Keeping this reality in mind, DF has been working with most of the urban and rural poor women.
- I. **Participation:** People's participation is a very crucial part of program operation as it creates ownership among them which is essential to make the program sustainable. DF tries to involve project participants at all stages of the project circle for long-term sustainability.
- J. **Poverty Reduction:** Poverty reduction is one of the major thematic areas of DF's program operations and a loan share of the fund is utilized in micro-credit programs towards poverty alleviation by generating income and improving the living standard of the target people.
- K. **Promoting the inclusion of Persons with Disabilities:** The Governance, inclusion of Persons with Disabilities and Human Rights are correlated. DF has been working in this field to promote human rights, inclusion of Persons with Disabilities and good governance by raising awareness among the marginalized and minority people and strengthening the legislative system of the country through bridging the gap between civil society and legislative organ. Promoting the inclusion of disability issues in all areas of development.
- L. **Advocacy and Networking:** Under this thematic area, DF always tries its best to advocate the issues of public interest influencing policy makers/stakeholders through lobbying, seminars, workshops, forming alliances and networking at local, regional and national levels.

DF Project components

Dipti Foundation project will be covered three main components, namely Resilient Livelihoods, Socio-economic development, Community Mobilization, and three cross-cutting issues — climate resilience, disability, and women empowerment.

Areas of Intervention

Resilient Livelihoods: Poor households are engaged in various Income Generating Activities (IGAs) with the help of a project-sponsored flexible menu of products. These products include grants, soft loans, technical support and relevant skills training over a longer time frame. Together, they enable the target households to develop a resilient livelihood strategy that supports larger and more sustained income and consumption gains and reduces their vulnerabilities to shocks. The project also aims to grow and transform some of the potential livelihoods into business clusters through value chain interventions, based on the competitive and comparative advantages of the augmented market system of the locality.

Socio-Economic Development: Socio-economic development will focus on delivering a social network for the mainstream of the poor community and engaging them with economic activities with innovation and new technology for their livelihood options. To get these services; Dipti Foundation will link to the use of the agriculture, livestock, social welfare, youth, and women department services of the GoB available at the local level.

The socio-economic development focuses on the delivery of a social network for mainstream of the poor community people and engage them with economic activities with innovation and new technology on their livelihood options. These services make use of the agriculture, livestock, youth and women services of the GoB available at the local level.

Direct Nutrition Intervention (DNI) and nutrition-sensitive interventions of individual households; community-level work to address some of the social practices that prevent good nutritional outcomes; and promoting income-generating activities that support nutrition outcomes where possible. The primary focus of the nutrition program are under-five children, pregnant and lactating mothers, adolescent girls and other women of child-bearing age.

Community Mobilization: This component works with extremely poor people and the wider community to build social support and change the social norms that exclude women, girls, people living with disabilities and others, limiting their access to basic services and work opportunities. Through grassroots advocacy, CM component also builds linkage with public and private institutions to ensure extreme poor people's access to various service system at the local level.

Disaster and climate resilience: This component promotes climate resilient livelihoods for income gains and mitigates impacts of climate hazards by promoting early warning systems in vulnerable communities. It also supports households in managing common risks such as illness as well as predictable disasters/climate related risks such as flood and cyclone.

Disability: This component is designed to address the specific needs of the extremely poor people with disability. Where possible, livelihood opportunities are tailored to their specific capacities. The project seeks to increase their access to social safety nets, where needed, to ensure that basic needs are met.

Women empowerment: This component focuses on gender relations within households and across the community involving both men and women. The project deliberately targets women as primary participants of the livelihood graduation component.

Recently accomplished Project: 2020-2023

1. COVID-19 Emergency Response Project – Food and Hygiene items distribution in Rangpur and Dinajpur district.
2. COVID-19 Response Project – Hygiene items distribution in Cox'sBazar district
3. Livelihood support project (LSP) Project – Blanket and Sewing machine distribution in Cox'sBazar district for the Rohingya and Host community.
4. Awareness on COVID 19 health safety and psychosocial counseling in Dhaka.
5. Vocational Skill Training for the Youth Empowerment Program
6. Subarnajatra- Golden Journey to Bangladesh.
7. "Accelerant Livelihoods Options for the Poor" (Handloom project) Supported by Hilfe für Brüder International e.V. and Christliche Fachkräfte International e.V. – Germany

Running project of the organization:

SL #	Name of the project	Area/Place	Name of the donor
1.	Women Empowerment and Capacity Building Project.	Rangpur Division	3XM - Netherlands, Coworkers
2.	Child Rights and Protection Program	Dinajpur, Nilphameri	Nozomi Project – Japan

3.	Microfinance Program	All Bangladesh	All Nation – Netherland & Board Members
4.	DRR&CCA Project	Dinajpur, Nilphamari	Asian Access – USA
5.	Pioneer Business Planting	All Bangladesh	All Nation - Netherland
6.	Pre-School program	Dinajpur, Nilphamari	Barnabas Fund - UK
7.	House of Hope Project	Dinajpur (All Bangladesh)	World Mobilization – Brazil and USA
8.	Youth Employment Support (YES) Project	Rangpur Division	TBF Trust, UK
9.	Job Creation Project for 20 vulnerable women, (Handloom Project)	Rangpur Division	TBF Trust, UK

Development Partners and Networks:

The development partners of DF as always have been playing a significant role in the implementation of projects providing technical and financial assistance to benefit marginalized people. DF has maintained or is maintaining partnerships with the following development agencies/institutions.

- **Coworkers** is the brand of the association's Hilfe für Brüder International e.V. and Christliche Fachkräfte International e.V. – Germany
- Nozomi Project – Japan
- Barnabas Fund Aid - UK
- Asian Access – USA
- EMK Centre
- NIRAPAD - Bangladesh
- Credit & Development Forum – Bangladesh
- World Mobilization – Brazil and USA
- World Renew - Canada/USA
- TearFund Uk
- All Nation - Netherland
- 3XM - Netherlands
- Department of Disaster Management - Dhaka
- Department of Aquaculture - Sher-e-Bangla Agricultural University
- Center for Disability in Development (CDD) – Savar
- TBF Trust, UK

Bank details:

Name of Accounts:	Dipti Foundation
Account number	1812007160
Bank Name	Commercial Bank of Ceylon Limited
Branch Name	Mirpur Branch
Bank Address	Plot No. 623-624, Begum Rokeya Sharani, Kazipara, Mirpur, Dhaka 1216
Bank Telephone	+88 -02- 8035808
SWIFT Code	CCEYBDDH
Routing Number	080262989

End